

PerforMax Plant DataJet™ Installation

Introduction

Once enrolled in the PerforMax Services an installation 'zip' file will be emailed to you. This same file can be used on all COMMANDbatch machines that you wish to connect to the PerforMax Plant Optimization™ Scorecard system, however, for security reasons the installation key expires in seven (7) days. If you cannot complete the installations in that time a new zip file can be sent to provide another seven-day window.

The PerforMax DataJet requires installation of a lightweight Alpine Linux image and minor configuration in the COMMANDbatch system. If the customer wishes to do it themselves, please follow these instructions. Total time should be about 15-30 minutes depending on the speed of your Internet connection.

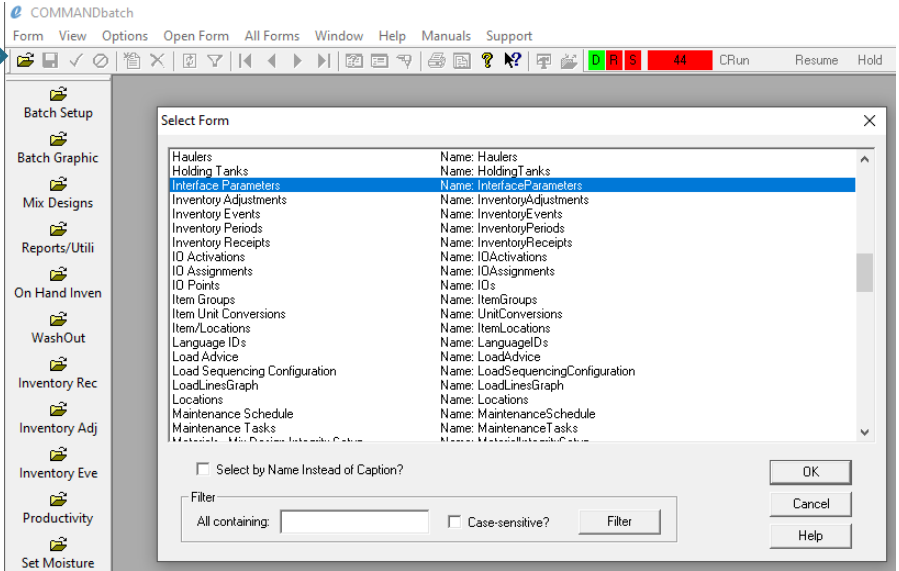
Installation

1. The recommended location for the 'zip' file is to place on the desktop but any location is fine.
2. Unzip the file which will create the folder "DataJetInstallPackage."
3. Double click to enter the folder.
4. Within the folder there is a file named "DataJetInstaller."
5. *** RIGHT CLICK AND RUN THIS FILE AS AN ADMINISTRATOR ***
6. The installation will check to see if WSL is installed. If it is not, it will install it, then instruct the user to reboot the system. You must reboot for WSL to be properly installed.
7. Upon reboot, return to the DataJetInstallPackage folder as before.
8. *** RIGHT CLICK AND RUN THE DataJetInstaller AGAIN AS AN ADMINISTRATOR ***
9. The installation will proceed automatically. When complete, the screen will appear like this:

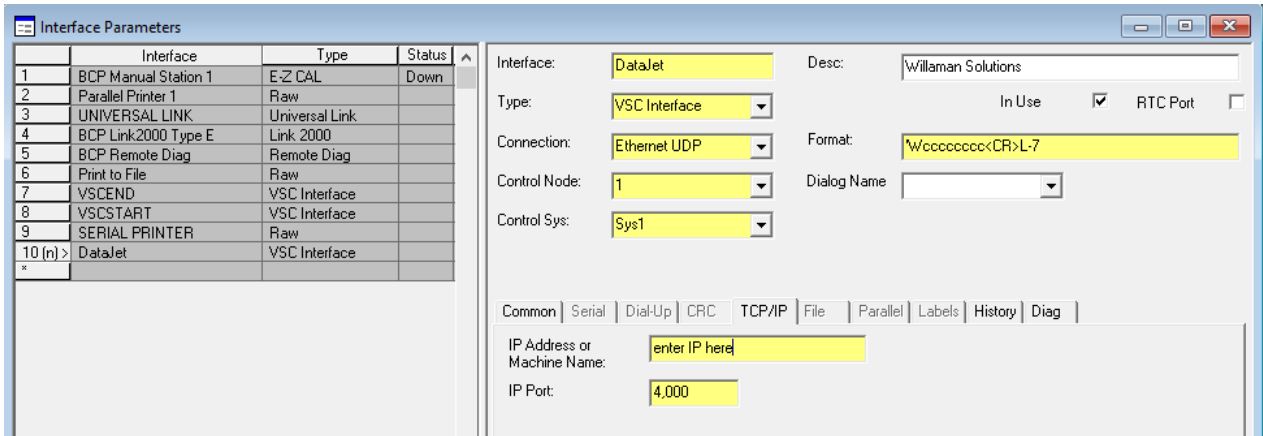
Configuring COMMANDbatch

1. Using the Windows Command Prompt, get the IP address that connects to the Internet.
2. Start the COMMANDbatch application with credentials that allow access to system configuration.
3. Open the Interface Parameters form

Click to open menu



Choose “Interface Parameters”

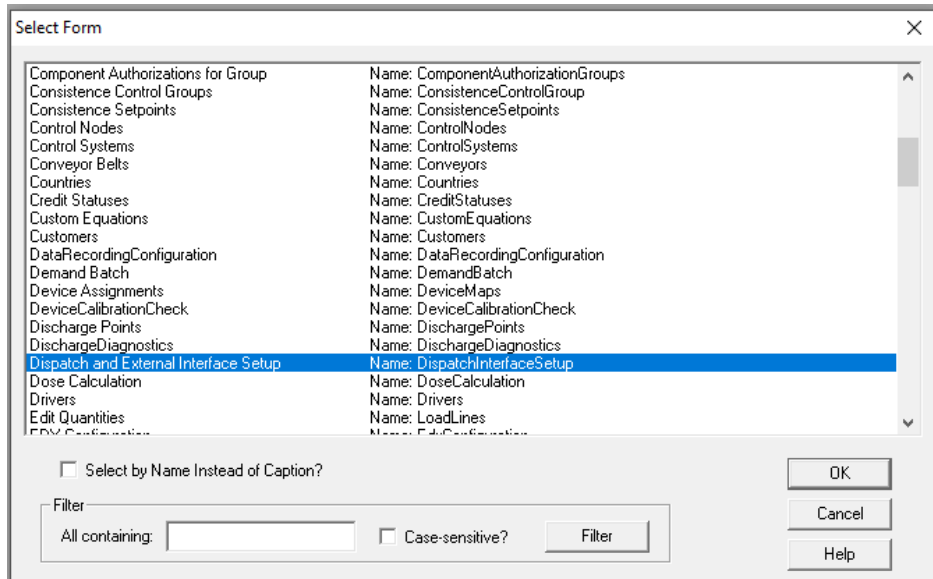


Add a new entry and add the following:

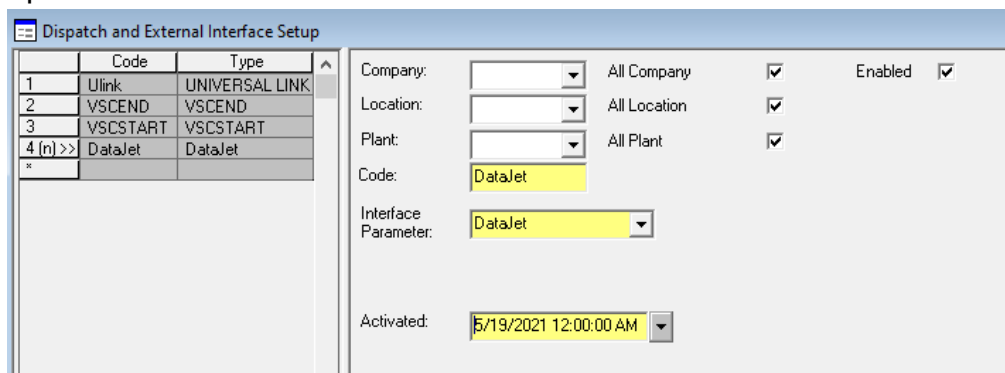
Field Name	Value
Interface	DataJet
Type	VSC Interface
Desc:	Willaman Solutions
Connection:	Ethernet UDP
Format:	'Wccccccc<CR>L-7
Apostrophe - capital 'W' - 8 c's - 'Less Than' - Capital 'CR' - 'Greater Than' - Capital 'L' - 'Dash' - 'Seven'	

Control Node:	Leave as is
Control Sys:	Leave as is
IP Address or Machine Name	Enter IP address from step 1
IP Port*	4000
Sometimes this is greyed out and won't accept a modification. If that happens, save the form then select the "TCP/IP" tab and it should now work.	

4. Open the "Dispatch and External Interface Setup" Form:



Enter the parameters as shown and save:



Code	Type
1	Ulink UNIVERSAL LINK
2	VSCEND VSCEND
3	VSCSTART VSCSTART
4 [n] >>	DataJet DataJet
*	

Company: [Dropdown] All Company Enabled

Location: [Dropdown] All Location

Plant: [Dropdown] All Plant

Code: DataJet

Interface Parameter: DataJet

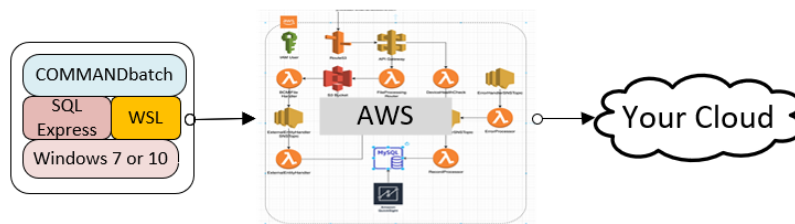
Activated: 5/19/2021 12:00:00 AM

Setup Complete.

About DataJet™

The Willaman Solutions PerforMax Plant DataJet™ provides a simple, reliable, and cost-effective solution to transport critical information from the COMMANDbatch system™ into the AWS based PerforMax Plant Optimization™ Scorecard in a matter of seconds.

Based on Windows® Subsystem for Linux (WSL) technology, DataJet is easy to install and requires no changes or license to the COMMANDbatch core software. DataJet receives signals in real-time from the COMMANDbatch system and immediately processes the information for transmission to AWS.



DataJet with WSL/AWS Architecture

The PerforMax DataJet does not require a permanent connection to the COMMANDbatch database and will not interfere with end-of-day, software upgrades, or other maintenance operations to COMMANDbatch.